

EH Auto Link (Asia) Sdn. Bhd. Company Profile



Topic

- **Introduction of EH Auto Link**
- **History**
- **Company Focus**
- **Company Objectives**
- **Global Presence**
- **Company Structure**
- **Services provided for Corporations and Consumers**
- **Web Presence**



EH Auto Link (Asia) was established in the 1970's. The following is an outline of the company.

| | |
|------------------------------------|--|
| Name | EH Auto Link (Asia) Sdn. Bhd. |
| Address | 12, Jalan 2/32A, Batu 6 ½, Off Jalan Kepong, 52100, Kuala Lumpur, Malaysia Tel: 6-03-6257-8000/9000 Fax: 6-03-6257-1752/8586 E-mail: forinfo@ehautolink.com.my Web: www.ehautolink.com.my |
| Startup date | 1970's |
| Capital Employed | MYR 12 Million |
| No. of employees | About 50 (as of April, 2003) |
| Business | Automotive -Manufacturing -Rebuilding -Distribution (wholesale & retail) |
| Subsidiaries and affiliates | EH Auto Link Sdn. Bhd. (MY) Asian Car Parts Limited. (NZ) Equal Link Co. Ltd. (JP) Autoparts International (JP) |



History

Phase 1

- 1970s Import of spare parts from Japan for local market in small scale
- 1980s Started the wholesale and retail market
- 1990s Started the EXPORT market
- 1990s (mid) Partnership with more than 30 trading partners in the world including Japan and New Zealand.

Phase 2

- 1998 Manufacturing, rebuilding,
- Onwards one stop service centre, in house workshop, expansion into servicing the government and corporate sector



EH Auto Link (Asia)

“REPUTABLE & RELIABLE COMPANY IN THE REGION”

Main Focus

- Distribution – wholesale & retail of new and used parts & (performance parts)
- Rebuilding of auto and manual gearbox
- One stop service centre
- Processing & refinery of precious metal



Leader in new surplus auto parts

Our main objective in the business



“To supply quality product at competitive prices”

“To be more consumer orientated by providing a one stop service centre”

“Upgrading of services and technology to suit the changing market”



EH Auto Link (Asia) Global Presence



Asian Car Parts Limited.

CNR Kaka Street &
Walmsley Road,
P.O. Box 22878,
Otahuhu, Auckland
New Zealand

Autoparts International

30-4 201 Asahi-Cho,
Ebetsu,
Hokkaido,
Japan

EH Auto Link Sdn. Bhd.

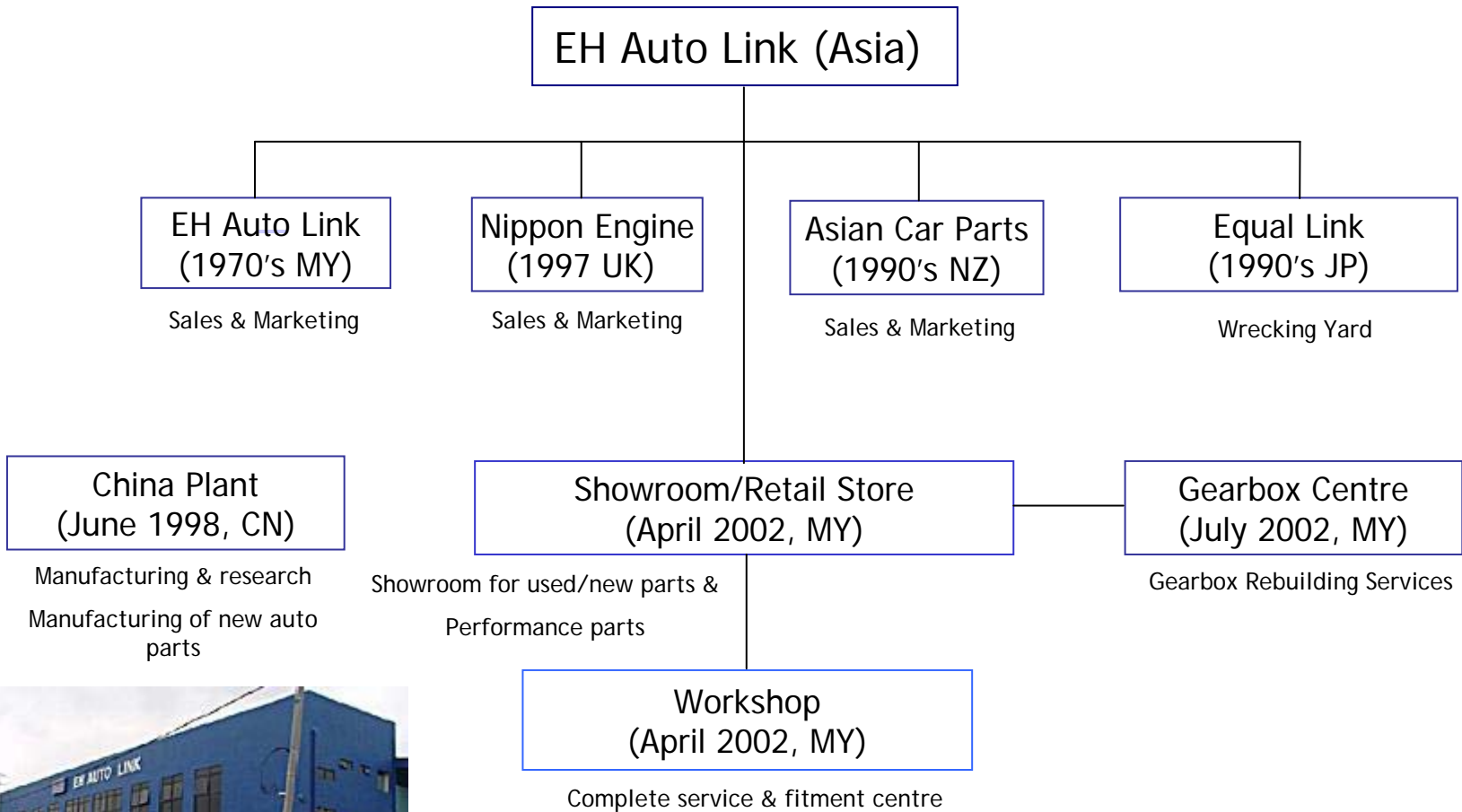
12, Jalan 2/32A, 6 ½ Mile,
Off Jalan Kepong, 52100
Kuala Lumpur
Malaysia

Equal Link Co. Ltd.

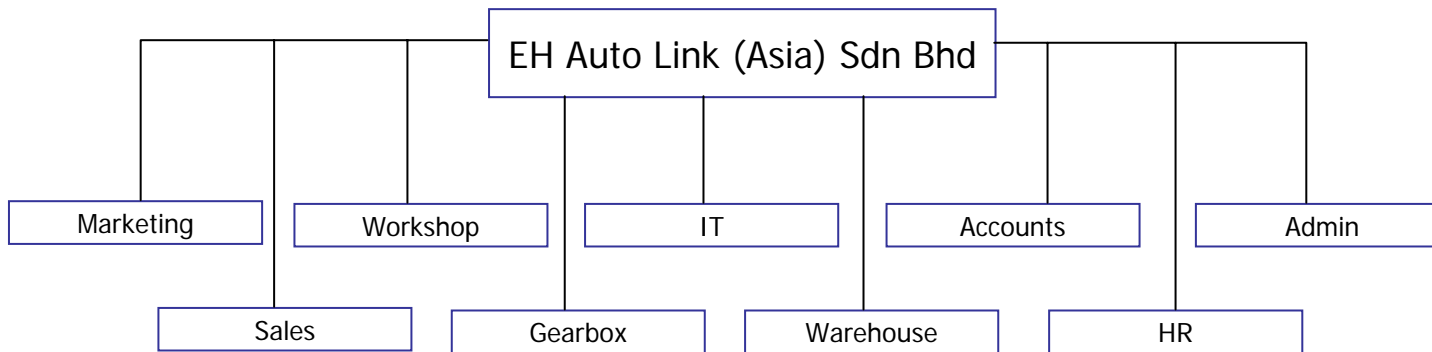
2141-1, Kutsukake
Sashima-machi,
Sashima-gun,
Ibaraki-Ken
306-05
Japan



EH Auto Link (Asia) Corporate Structure



EH Auto Link (Asia) Management Structure



Business focus to meet all the needs of our customers in the global supply of automobile surplus and services.



- Heavy equipment
Crane, dump truck, prime mover, excavator
- Vehicle
Commercial, 4X4, passenger
- Engine components & accessories
- Mechanical & electrical
- Body parts



Business focus to meet all the needs of our customers in the global supply of automobile surplus and services.

| | Products | Services |
|--|---|--|
| <p>Wholesale & Retail Business</p> <p>Workshop – Servicing & Fitment center</p> <p>Manufacturing Performance parts</p> | <p>Wholesale – domestic & overseas (engines, transmission & etc.)</p> <p>Retail – domestic (*overseas)</p> <p>Showroom/retail-store</p> <p>Internet – store front</p> | <p>Product Sourcing</p> <p>Workshop – vehicle servicing and Fitment Centre</p> |
| <p>Recondition & Rebuilt of Automotive Parts</p> | <p>Transmission rebuilding & engine Rebuilding</p> | <p>Recondition auto parts to supplement workshop operation</p> |
| <p>Recycling of used automotive parts &</p> <p>Processing & Refinery of precious metal</p> | <p>Recycling of used auto parts (scraps & etc.)</p> <p>Refinery & processing of catalytic Converters & other auto parts for Precious metal</p> | |



Web Presence



Corporate Website – www.ehautolink.com.my



Store Front – www.potongkereta.com



Leader in new surplus auto parts